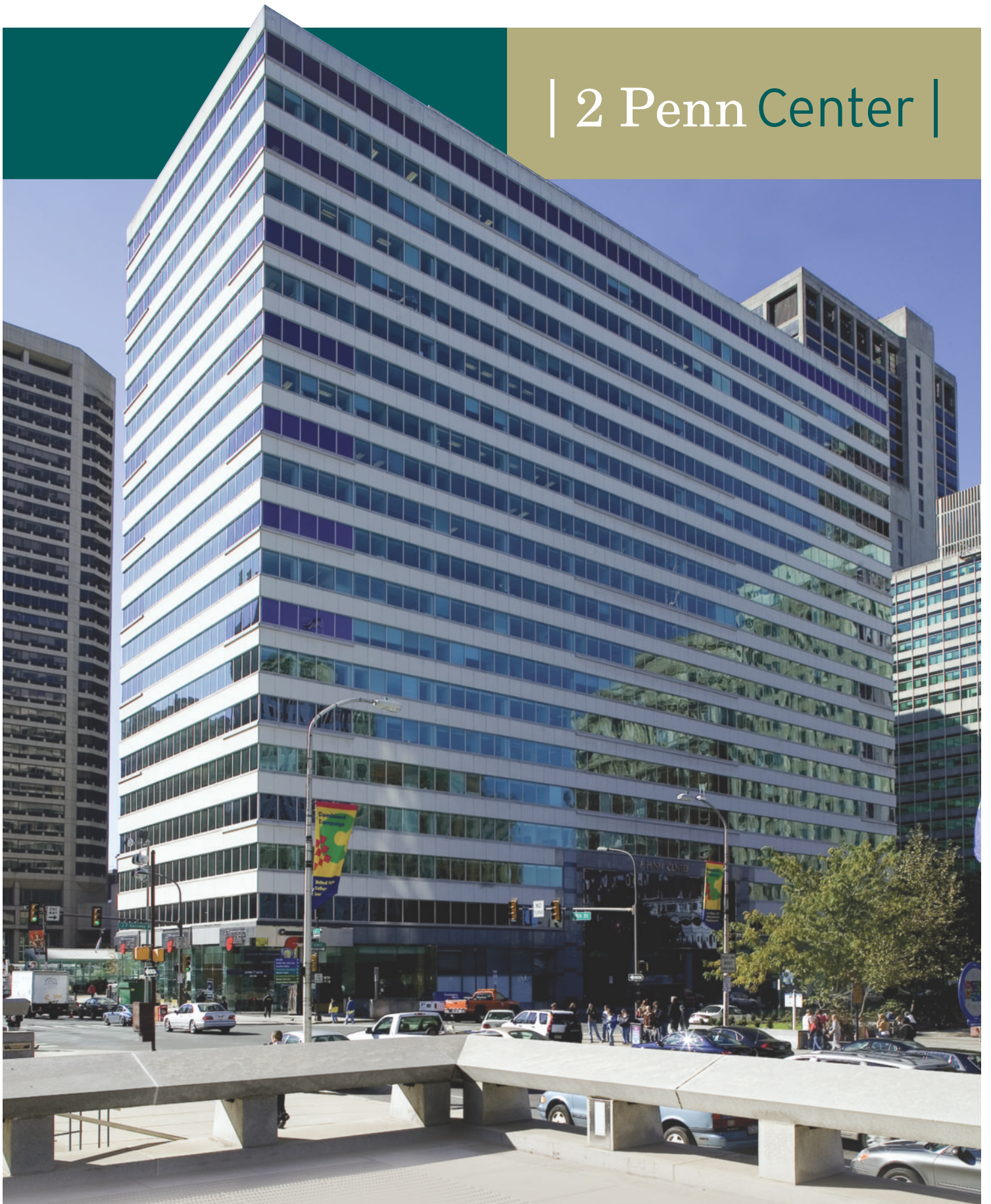


| 2 Penn Center |



The center of Center City.

1500 JFK BOULEVARD | PHILADELPHIA PA

Convenience to everything is only the beginning.

If you want your business to be in the center of everything, Two Penn Center is perhaps the most ideally located Class "A" building in Philadelphia.

Two Penn Center puts you there:

- Directly across from City Hall
- Direct access via concourse level to underground pedestrian and transit network
- Weather-protected access to SEPTA commuter transit system
- Philadelphia's finest restaurants, retail stores and hotels are just blocks away
- Unparalleled views of City Hall and LOVE Park areas

Two Penn Center is a classic:

- Historically significant; Part of the original Penn Center Plaza
- SW corner of 15th Street and JFK Blvd.
- Approximately 500,000 SF with available suites from 2,000 to 26,000 SF
- More than 10,000 SF of underground concourse shops

Two Penn Center is secure:

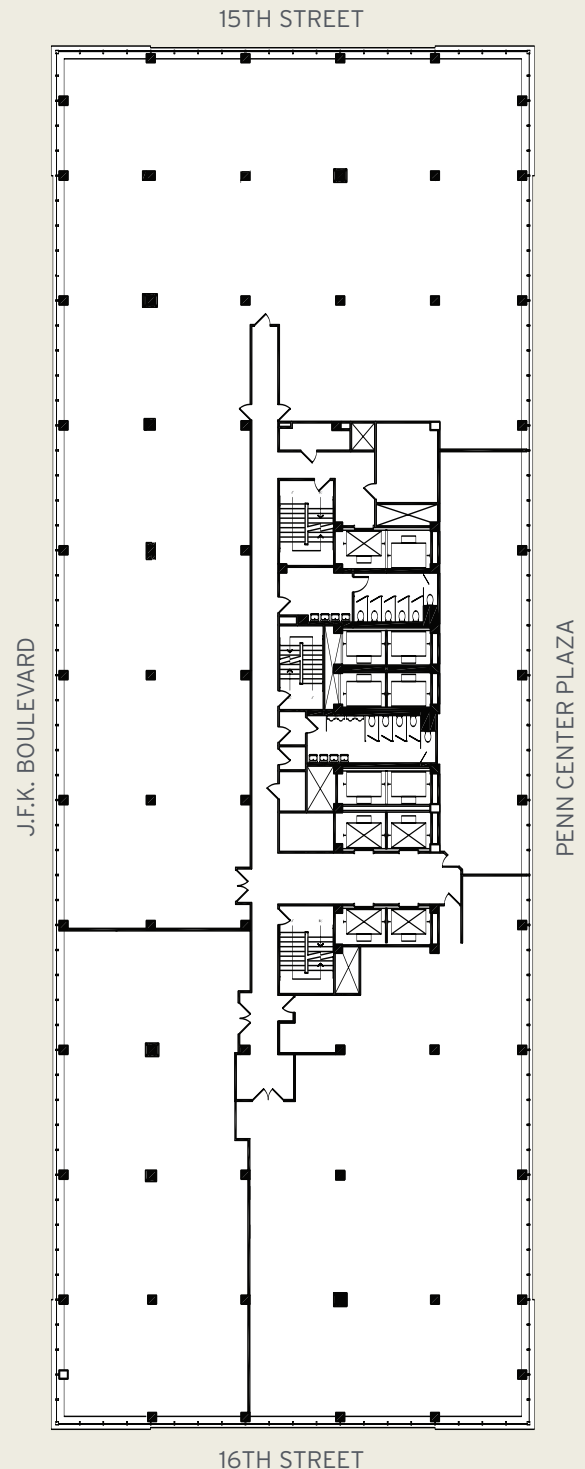
- Entire building is sprinklered
- Smoke detectors strategically located on each floor
- Three fire towers, all equipped with fire wet standpipe
- Three alarm pull stations on each floor
- Diesel generator provides emergency electrical power
- 24/7 manned security, video monitoring system and magnetic card readers

Two Penn Center is comfortable:

- HVAC system controlled by EMS (Energy Management System), assuring comfortable air flow and temperature all year-round
- Ample power for standard office circuitry and lighting

Two Penn Center connects you to success:

- Direct TV and high-speed fiber-optic services
- Fully equipped complimentary conference room
- WIFI capability throughout the building



| 2 Penn Center |

For leasing information, please contact:

Stephen P. Perna
Senior Vice President
The Arden Group
(215) 735-1313 ext. 129
spp@arden-group.com

Matthew W. Frederick
Vice President
The Arden Group
(215) 735-1313 ext. 128
mwf@arden-group.com